

ELITE



PRO



Programming Parameter Guide rev:1A



How to use Programmer:

Start Programming application

Runs On PC or Mac running Windows 7/10.

To put Handset into programming mode, first attach programming cable between device Hirose port and PC then press red handset on/off button while holding PTT. LED will light red.

To put Gateway into programming mode, press the Gateway ON/OFF button while attaching programming cable to device micro-USB port and PC USB port. LED will light red. Note: The gateway's RJ45 socket should not be connected to the host radio.

Always READ device first before proceeding further.

Suggest you then save file onto your PC for re-loading if required.

Read Device

Press to load current programming parameters from device to screen.

Program Device

Press to load current screen programming parameters to device.

Load File

Press to load a previously saved programming parameters to device from its saved PC location.



Save File

Press to load a programming parameters from screen to desired PC location saved location.

Defaults

Press to load screen with default device parameters.

Exit

Press to exit program.

Restart (important)

Press to restart programmed device before removing programming cable



Handset Parameters





Programming Feature:

Basic functions - Handset

Radio PTT key beep

Sounds talk permit tone sequence whenever PTT is pressed and handset is in range of its gateway. **Default - OFF**

Emergency key beep

Sounds single tone whenever Emergency button is pressed and handset is in range of its gateway. **Default - ON**

Talkaround PTT key beep

Sounds talkaround tone sequence whenever Talkaround button is pressed and handset is in range of its gateway. **Default - ON**

Stealth mode always active

Disables all alert tones and LED status light. User can manually enable stealth mode if programmed off. **Default - OFF**

Mute speaker on PTT

Disables all speaker audio whenever PTT is pressed. **Default - OFF**

Mute speaker on charge

Disables speaker when handset is in gateway or a charger. **Default - ON**

LED charge indicate

Disables "momentary blink" charge indicate when handset is placed into gateway or a charger and device is charging. **Default - ON**

Auto turn on when charging

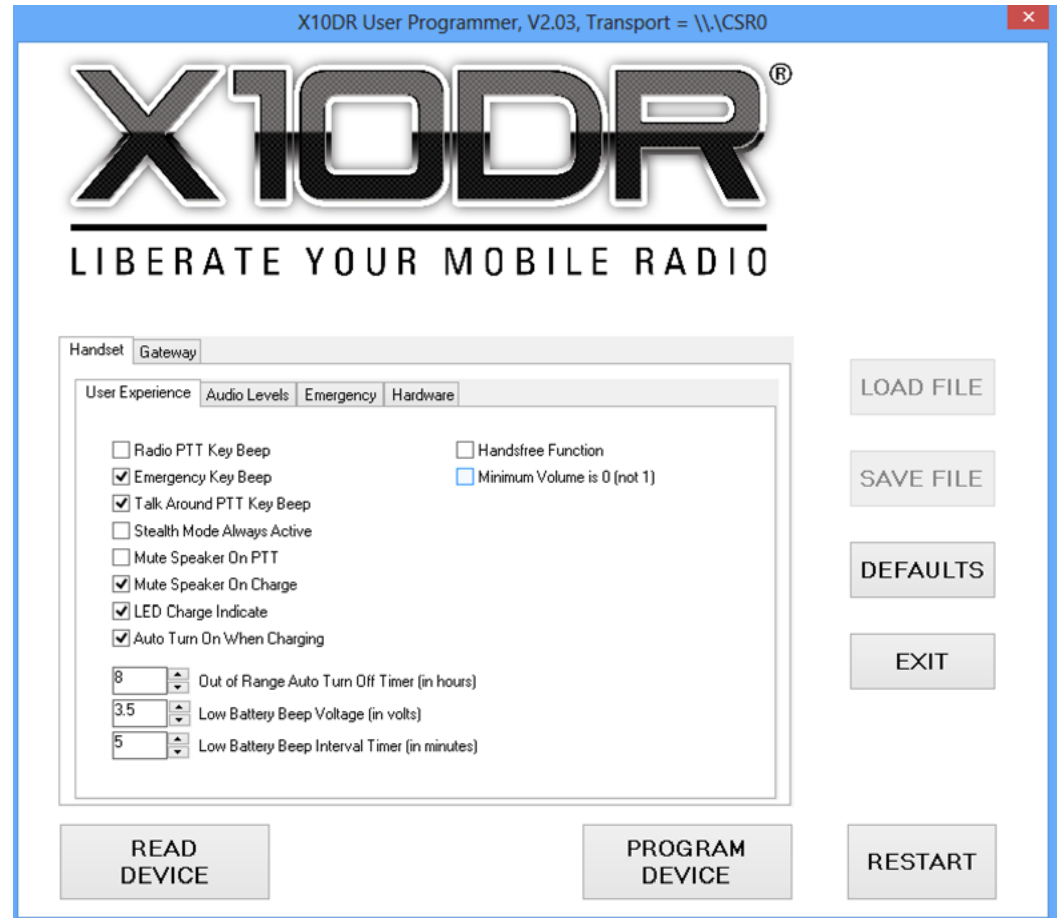
Causes handset to automatically turn on whenever it is placed in gateway or a charger. **Default - ON**

Handsfree Function *(shows "disabled" if feature not enabled)*

Enables user selectable handsfree function in Elite handsets purchased with XHFO handsfree option. **Default - OFF**

Minimum volume is 0

Allows user to turn the speaker audio off instead of level 1. **Default - OFF**



Out of range turn off time

Sets time in hours that a handset that is not actively connected to a gateway will remain powered on before turning itself off. **Default - 8 hours**

Low battery beep voltage

Sets the remaining battery voltage that will cause the low battery alert tones to be generated. (for longer shift life you may set voltage lower but you may get less warning before device automatically shuts off. **Default 3.5V**

Low battery beep interval timer

Sets the interval that the low battery alert tones are sounded in the handset. **Default 5 minutes**





Programming Feature: Audio Levels - Handset

Note: we suggest that you adjust the gateways output levels to set the overall audio levels being received or passed to the host mobile radio. For ease of setting use the **Gateway Audio Level Adjustment** - XGALA software tool that was included in the downloaded programming software package.

The following handset adjustments are designed to cater for different accessories and /or applications requiring alternate audio sensitivities under different operating conditions.

Internal Mic Gain

Sets the internal microphone's transmit audio level sensitivity. **Default 0**

Internal Mic High Gain Boost

Sets the internal microphone's sensitivity when "Live Mic" is active. **Default 6**

External Mic Gain

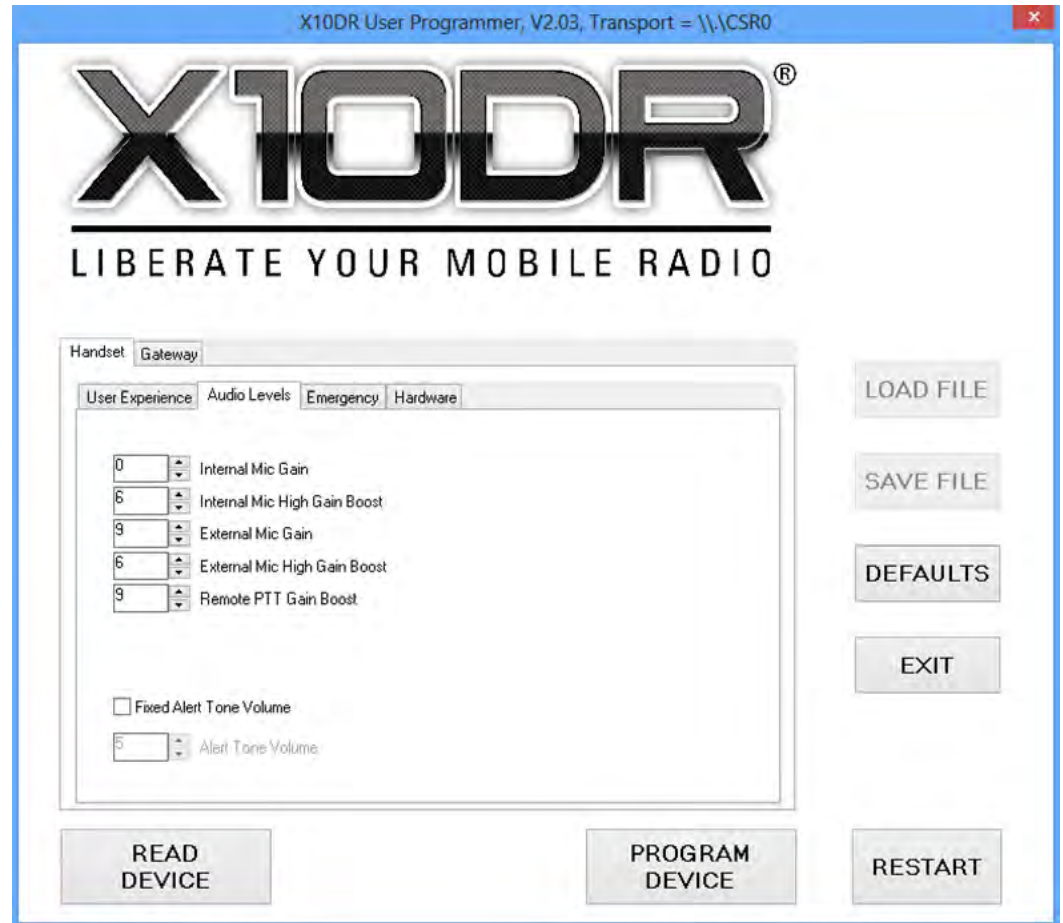
Sets the external microphone's transmit audio level sensitivity. **Default 9**

External Mic High Gain Boost

Sets the external microphone's sensitivity when the X10DR's "Live Mic" is active or when user manually selects high gain by powering up microphone with blue volume up button pressed. **Default 6**

Remote PTT Gain Boost

Increases sensitivity of internal microphone when remote/handlebar PTT is pressed. **Default 3**



Fixed Alert Tone Volume

Limits all user monitored alert tones to level set below rather than being controlled by handset volume controls. **Default OFF**

Alert Tone Volume

Sets the value of the "Fixed Alert Tone" when enabled that a user will hear from their handset. **Default 5**





Programming Feature: Emergency - Handset

Audio link active time

- *Applicable when handset is configured for press & hold emergency*
Sets the duration the transmit audio is active after Emergency button is released. Feature is intended for those mobiles that activate their own internal "Live Mic" function whenever emergency is triggered. This allows the handset's Tx audio to be broadcast over the radio's transmit channel, (assuming mobile sources "Live Mic" from its external mic input). **Default - 0**

Advanced Emergency - Elite Models only

- *Applicable when Elite handset is configured for short/long press emergency*

Transmit Time

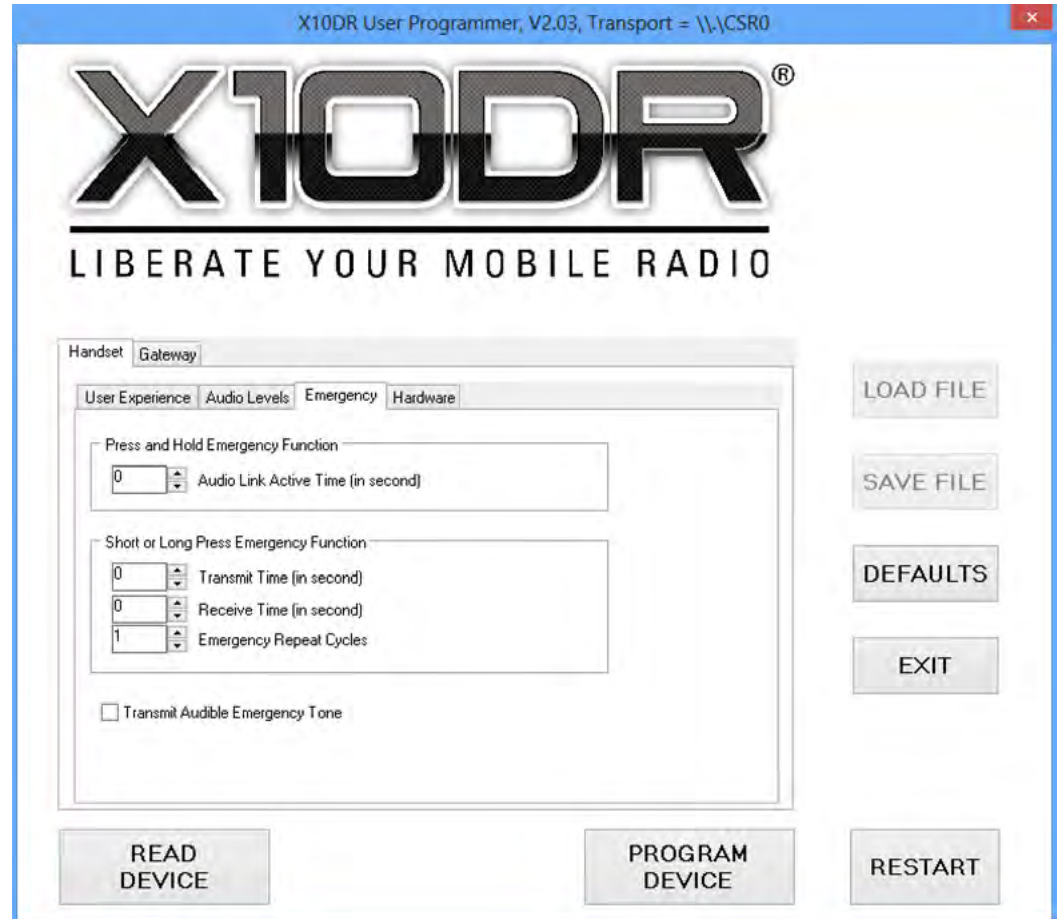
Sets the time duration that X10DR "Live Mic" handset Tx audio is active when Advanced Emergency activated. **Default - 0**

Receive Time

Sets the time duration that X10DR "Live Mic" handset Rx audio is active when Advanced Emergency activated. **Default - 0**

Emergency repeat cycles

Sets the number of "Live Mic", Tx and Rx cycles when Advanced Emergency is triggered. **Default - 1**



Transmit audible emergency tone

Causes an audible emergency warble tone to be transmitted over the host mobile radio channel when emergency is activated. **Default Off**

Programming Feature: Hardware - Handset

Acc PTT

Sets whether Hirose PTT input generates Talkaround or radio PTT. **Default - Radio PTT**

PTT

Sets function of main large PTT button. Choose from drop down box. **Default - Radio PTT**

Top 1

Sets function of top left button. Choose from drop down box. **Default - Emergency**

Top 2

Sets function of top right button. Choose from drop down box. **Default - Talkaround PTT**

Left 1

Sets function of top left button.

Press & Hold Choose from drop down box.

Short or Long Press Choose from drop down box.

Default - short press Volume up

Left 2

Sets function of bottom left button.

Press & Hold Choose from drop down box.

Short or Long Press Choose from drop down box.

Default- short press Volume down

Right 1

Sets the function of right side button. Re-assigning requires hardware modifications.

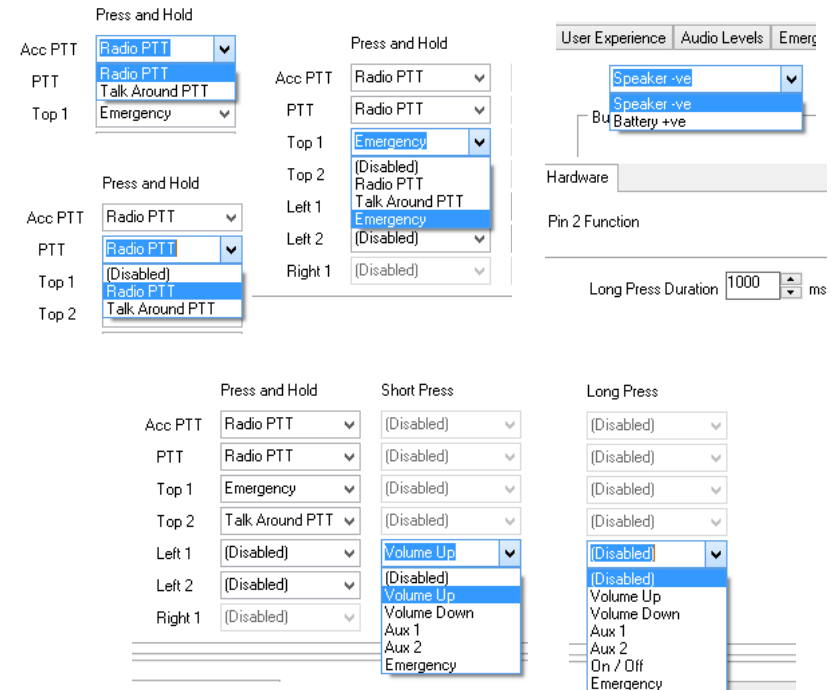
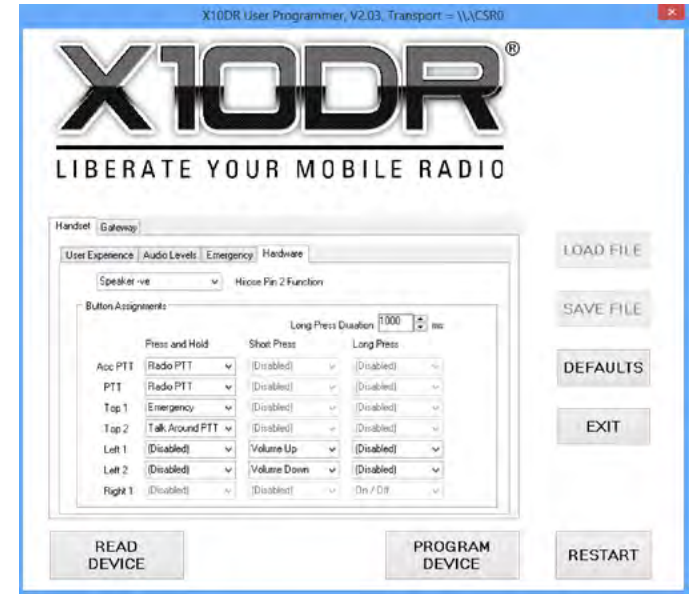
Default - OFF/ON

Hirose Pin 2 function - Elite models only

Sets Hirose pin 2 to be either BAT+ (~3.8VDC) to power external accessories or bridged output speaker audio when pin 2 is set for speaker negative. **Default - Speaker VE-**

Long Press Duration

Sets time button must be pressed to detect a Long Press. **Default - 1000mSec**



Gateway Parameters

ELITE



Status light

Function Button
- Manual Off/On
- Master Reset
- Find Me

PRO





Programming Feature: Audio Levels - Gateway

Receiver Input Gain From Radio

Sets the receive input sensitivity. **Default - 3**

Transmit Output Gain To Radio

Sets the audio output level to radio when "Live Mic" is active or when local/remote /handlebar PTT is pressed. **Default - 0**

Talk Around Output Gain to other X10DRs

Sets the "intercom" microphone audio level. **Default - 9**

For ease of setting the above you can also use the **Gateway Audio Level Adjustment** - XGALA software tool that was included in the downloaded programming software package.

Monitor Emergency Input Alert Tone - Elite Models Only

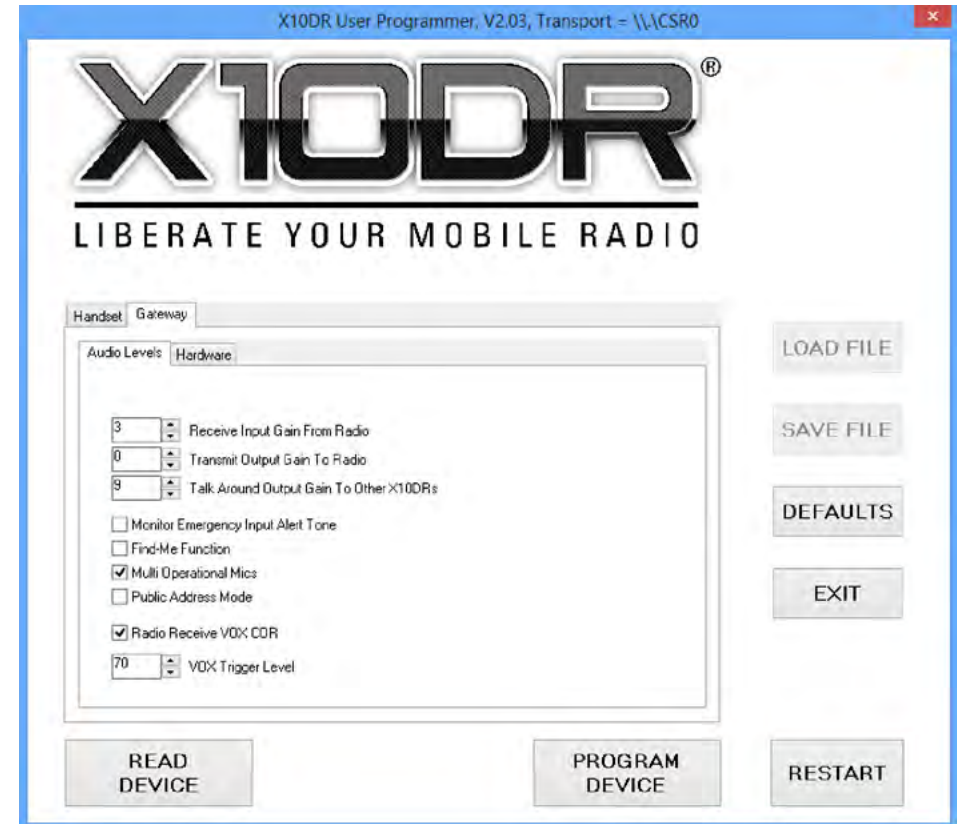
Causes Emergency warble alert tone to sound in all cross connected X10DR handsets whenever emergency input is triggered. (Maybe triggered from another gateway or externally supplied ground input). **Default - OFF**

Find Me™ Function

Enables Find Me function in gateway. User double presses gateway Function button to trigger Find Me alert tones. **Default - OFF**

Multi Operational Mics - Elite Models Only

Allows two or three Elite Mics to be simultaneously operational through the one Elite gateway unit. **Default - ON**



Public Address Mode - Elite Models Only

Sets the gateway so only handset Talkaround audio is amplified to the 8 watt audio amplifier. When unchecked both Radio PTT and Talkaround audio is amplified for in-car monitor use. **Default - OFF**

Radio Receive VOX/COR

Enables VOX derived COR. **Default - ON**

VOX Trigger Level

Sets the gateway's audio detect sensitivity for VOX derived COR. **Default - 70**





Programming Feature: Hardware - Gateway

I/O

Defines whether the specific gateway interface pin is assigned as an input or an output.

Active

Sets whether the interface pin needs to be held low or pulled up high to activate assigned functionality.

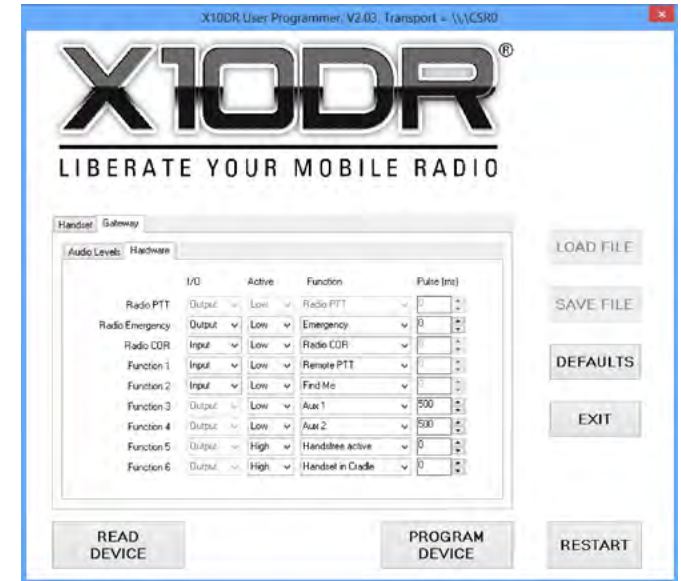
Function

Assigns desired functionality to Interface pin

Choose the desired input or output from the dropdown boxes

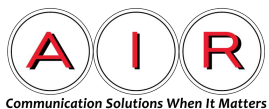
Pulse

Defines the length of time an input must be activated before the function is triggered or alternatively how long an output is activated when the assigned function has been triggered. A value of zero means an input triggers instantly.



	I/O	Active	Function	Pulse (ms)
Radio PTT	Output	Low	Radio PTT	0
Radio Emergency	Output	Low	Emergency	0
Radio CDR	Input	Low	Radio CDR	0
Function 1	Output	Low	Remote PTT	500
Function 2	Output	Low	Find Me	500
Function 3	Output	Low	Aux 1	500
Function 4	Output	Low	Aux 2	500
Function 5	Output	High	Handstree active	0
Function 6	Output	High	Handset in Cradle	0

	I/O	Active	Function	Pulse (ms)
Radio PTT	Output	Low	Radio PTT	0
Radio Emergency	Output	Low	Emergency	0
Radio CDR	Input	Low	Radio CDR	0
Function 1	Output	Low	Disabled	500
Function 2	Output	Low	Remote PTT	500
Function 3	Output	Low	Find Me	0
Function 4	Output	Low	Handset in Cradle	0
Function 5	Output	High	Handset out of Range	0
Function 6	Output	High	Disabled	100



American International Radio(A.I.R.), Inc.

3601 E. Algonquin Rd.

Rolling Meadows, IL 60008, U.S.A.

www.airradio.com

sales@airradio.com

