

Radio Dispatch Solutions

Termination Panels and Telephone Interconnect



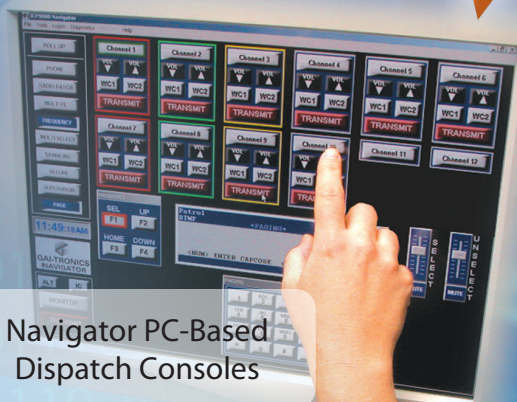
Basic Remote Desksets (Tone, DC and Local)



Advanced Remote Desksets with Paging and MDC1200



Navigator PC-Based Dispatch Consoles



CommandPLUS Desktop Dispatch Consoles



Audio Accessory Box



Overview

GAI-TRONICS has been manufacturing Radio Dispatch Products for over 30 years. We take pride in the fact that our dispatch products are designed, manufactured, and supported at our factory in Mohnton, Pennsylvania. Our ISO9001:2000 Registered manufacturing facility utilizes industry-leading technology to ensure high quality and reliable performance. Industry-rated at the top of the quality scale, GAI-TRONICS' dispatch products remain competitive at both full-feature and economical ends of the pricing spectrum.

GAI-TRONICS' dispatch product technical support staff provides both telephone support and in-house depot repair services. From answering product programming questions to rebuilding a console after a lightning strike, our dedicated technicians are committed to providing the highest level of support.

Applications

GAI-TRONICS' Radio Dispatch Products are ideally suited for a number of applications. Some of the more common are:

- Individual Public Safety Offices
(In-system communications for Fire, Police, EMS, etc.)
- Utilities
- Central Dispatch (multi-system communications)
- Forestry Service
- Transportation
- Security
- Any application requiring remote radio control, used for dispatching personnel/vehicles or general communications, from a central location or distributed locations.

Single Radio / Base / Repeater Control



Local Remote Deskset - Model ILD1000A

The ILD1000A Local Deskset connects directly to the controlled base station or repeater, via a leased or private line, for economical remote control.

Features include:

- Selectable Latching Monitor
- Multiple Parallel Deskset Support
- Selectable Off-hook Monitor
- Front Panel Audio Mute/Unmute
- Full Duplex Capable
- Includes PTT Handset
- Intercom
- Selectable Parallel Transmit Audio Mute
- Local Speaker
- Adjustable Rec. Input Sensitivity and Transmit Output Level
- Built-in Microphone and Speaker
- Dipswitch Configurable

Note: 1. Power supply is not included (power typically obtained from radio).
2. Maximum distance 1000 to 1200 feet.



DC Remote Deskset - Model IDR1000A

The IDR1000A DC Remote Deskset connects to a DC adapter or DC- ready radio, via a leased or private line. The IDR1000A utilizes changes in DC line current to remotely control PTT, monitor, and up to four radio frequencies.

Features include:

- Programmable 4-Frequency Control
- Monitor
- Selectable DCLOTL
- Selectable Off-hook Speaker
- Front Panel Audio Mute / Unmute
- Includes PTT Handset
- Includes Plug-in Pwr. Supply
- Selectable Parallel Transmit Audio Mute
- Intercom
- Multiple Parallel Deskset Support
- Built-in Microphone and Speaker
- Adjustable Rec. Input Sensitivity and Transmit Output Level
- Line Receive and Transmit Compression
- Dipswitch Configurable



Tone Remote Deskset - Model ITR1000-001

The ITR1000-001 Tone Remote Deskset allows control of one or two radios by connecting to a tone remote adapter or tone-ready radio, via a leased or private line. The ITR1000-001 provides basic remote functions and utilizes standard EIA function tones to remotely control PTT, monitor, and up to four radio frequencies.

Features include:

- Programmable 1 or 2 Radio Control
- Parallel Transmit Audio
- Monitor
- Selectable Off-hook Monitor
- Selectable Off-hook Speaker
- Front Panel Audio Mute/Unmute
- Includes PTT Handset
- Includes Plug-in Pwr. Supply, 110 VAC
- Programmable 3 or 4-Frequency Control
- Intercom
- Multiple Parallel Deskset Support
- Built-in Microphone and Speaker
- Adjustable Rec. Input Sensitivity and Transmit Output Level (up to +15 dB)
- Line Receive and Transmit Compression
- Dipswitch Configurable

Note: The ITR1000-001 monitors only the selected channel.

Tone Remote Pager / Encoder with MDC1200 (C200) - Model L3149B

The L3149B C200 Advanced Tone Remote Deskset provides functionality similar to the IPE2500A. Providing DTMF encode only, the L3149B additionally offers true MDC1200 compatibility.

Features include:

- Programmable 16-Frequency Control
- Single-button Paging
- Multiple Parallel Deskset Support
- 4 Programmable Inputs/Outputs
- Programmable Voice Delay
- Full Duplex Capability, 2 or 4-Wire
- Front Panel Audio Mute/Unmute
- Adjustable Rec. Input Sensitivity and Transmit Output Level
- Built-in Microphone and Speaker
- DTMF Encode
- PC Programmable
- Programmable Quick Pages, Aliases, and Group Pages
- 2-Line Adjustable LCD Display
- Parallel Status Updating
- Parallel Transmit Audio
- Line Operated Transmit Light (LOTL)

- MDC1200 Compatibility
- Line Receive and Transmit Compression
- External Connections for power, line connection, and desktop microphone
- Includes PTT Handset and Plug-in Power Supply, 110VAC



Tone Remote Page / Encoder with Multi-Line Select Model IPE2500A-MLS

The IPE2500A-MLS Advanced Tone Remote Deskset with Multi-Line Select provides most of the features of the standard IPE2500A (DTMF Decode and Parallel Status Update are not provided) with the additional capability of selecting up to four separate lines (radios). This deskset is ideal for low-cost, multi-radio control if full console features are not required. Each channel is monitored via a single integral speaker with separate volume controls for select or unselect channels. An optional external speaker kit, model XAC0120A, provides audio segregation between the select and unselect channels.

Features include:

- 4-Line Control
- Programmable 16-Frequency Control
- Single-button Paging
- Multiple Parallel Deskset Support
- 4 Programmable Inputs/Outputs
- Programmable Voice Delay
- Full Duplex Capability, 2 or 4-Wire
- H.E.A.R. System Compatibility
- Adjustable Rec. Input Sensitivity and Transmit Output Level
- Built-in Microphone and Speaker
- PC Programmable
- Select/Unselect Channel Monitoring
- Programmable Quick Pages, Aliases, and Group Pages
- 2-Line Adjustable LCD Display
- Parallel Status Updating
- Parallel Transmit Audio
- Line Operated Transmit Light (LOTL)
- DTMF Encode
- Front Panel Audio Mute/Unmute
- External Connections for power, line connection, and desktop microphone
- Line Receive and Transmit Compression
- Includes PTT Handset and Plug-in Power Supply, 110 VAC



Products

Desksets

Tone Remote Deskset - Model ITR2000A

The ITR2000A connects to a tone remote adapter or tone-ready radio, via a leased or private line. The ITR2000A is PC-programmable, offering more features than the basic ITR1000A deskset. All connections are modular, allowing ease of installation. A model XDM002A Desk Microphone can plug directly into the rear of this deskset.



Features include:

- 4-Frequency Control
- Monitor
- Multiple Parallel Deskset Support
- Parallel Transmit Audio
- Programmable Voice Delay
- Front Panel Audio Mute/Unmute
- Built-in Microphone and Speaker
- Adjustable Rec. Input Sensitivity and Transmit Output Level
- Includes PTT Handset
- PC Programmable
- Parallel Status Updating
- Intercom
- Line Operated Transmit Light (LOTL)
- Selectable Parallel Transmit Audio Mute
- 2 or 4-wire Operation
- Full-Duplex Capability
- Line Receive and Transmit Compression
- External Connections for power, line connection, and desktop microphone
- Includes plug-in power supply, 110 VAC

Tone Remote Pager / Encoder - Model IPE2500A

The IPE2500A Advanced Tone Remote Deskset provides tone control with enhanced, console-like features. The IPE2500A provides paging functions and includes an LCD display. Virtually every aspect of this deskset is PC-programmable, providing the flexibility needed for cost-effective and productive dispatching.



Features include:

- Programmable 16-Frequency Control
- Single-button Paging
- Multiple Parallel Deskset Support
- 4 Programmable Inputs/Outputs
- Programmable Voice Delay
- Full Duplex Capability, 2 or 4-Wire
- H.E.A.R. System Compatibility
- Adjustable Rec. Input Sensitivity and Transmit Output Level
- Built-in Microphone and Speaker
- PC Programmable
- Programmable Quick Pages, Aliases, and Group Pages
- 2-Line Adjustable LCD Display
- Parallel Status Updating
- Parallel Transmit Audio
- Line Operated Transmit Light (LOTL)
- DTMF Encode/Decode
- Front Panel Audio Mute/Unmute
- External Connections for power, line connection, and desktop microphone
- Line Receive and Transmit Compression
- Includes PTT Handset and Plug-in Power Supply, 110 VAC

Products

Consoles

CommandPLUS Desktop Console

The CommandPLUS Desktop Dispatch Console is a full-featured, multi-station radio dispatch controller. It is available in three models for controlling 4 (ICP9004A), 8 (ICP9008A), or 12 (ICP9012A) base stations or repeaters. The 4 and 8 channel consoles are field expandable (4-channel expansion kit) to accommodate future growth. The CommandPLUS Series Console will accommodate direct plug-in connection of our gooseneck microphone, handset, footswitch, or headset interface box.

Standard Features include:

- 4, 8, or 12 Channel Support
- Stack Paging
- Alert Page
- One-Touch Paging
- DTMF Decode for ANI
- Full MDC1200 Stat Alert Support
- Adjustable Alert and Paging Tones
- Multiple Parallel Console Support
- Multiple Alert Tones (4)
- 16 Frequency Control
- Tone (default), DC (option) or E&M (option) Control
- Multi-channel Sequential Group Paging
- Select/Unselect Channel Volume Control
- Summed Audio Output to Logging Recorder
- Multi-Channel Radio Patch
- Programmable Buttons (2 Per Channel)
- Includes CARD Suite Programming Software



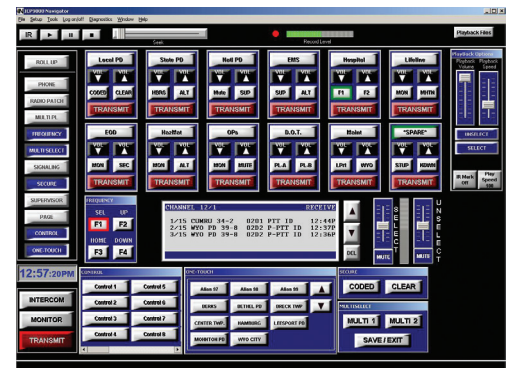
Options: DC Control, E&M Signaling, Supervisory Control, Direct Telephone Interface (single line), External Telephone Interface (multi-line), MDC1200 Stat Alert functionality.

Navigator PC-Based Console

The Navigator PC-based Dispatch Console offers all the features of our ICP9000 Series Desktop Console, in a Graphical User Display format. It is available in three models for controlling 4 (ICPN9004A), 8 (ICPN9008A), or 12 (ICPN9012A) base stations or repeaters. The PC-based format allows greater flexibility for changes and feature programming/options. The Navigator will also accommodate direct plug-in connection of our audio accessories.

Standard Features include:

- 4, 8, or 12 Channel Support
- 16 Frequency Control per Channel
- Stack Paging
- One-Touch Paging
- Programmable Channel Buttons
- Alert Page
- DTMF Decode for ANI
- Full MDC1200 Stat Alert Support
- Adjustable Alert and Paging Tones
- VU Meter and 24-Hour Clock
- Includes 110/220VAC Power Supply
- Multiple Parallel Console Support
- Touchscreen, Wand, or Mouse Operation
- Tone (default), DC (option) or E&M (option) Control
- Quick-Page
- Individual Channel Volume Control
- Multi-channel Sequential Group Paging
- Select/Unselect Channel Volume Control
- Summed Audio Output to Logging Recorder
- Multi-Channel Radio Patch
- Multiple Alert Pages (4)
- Includes CARD Suite Programming Software



Options: DC Control, E&M Signaling, Supervisory Control, Direct Telephone Interface (single line), External Telephone Interface (multi-line), MDC1200 Stat Alert functionality, Instant Recall Recorder, Output Control (32 outputs), Output Control Relay Kit

Note: PC, Monitor, and PC speakers are not include and must be customer-provided

Products

Adapters & Interconnects

Tone Remote Adapter - Model ITA2000A

The ITA2000A Tone Remote Adapter uses a state-of-the-art digital signal processor (DSP) to ensure highly accurate and fast tone decoding and audio filtering. It allows a tone remote deskset to control a radio station from a remote location through dedicated, leased or private lines. The ITA2000A decodes standard EIA tone keying sequences on the phone line from the tone remote deskset.



* US Patent 6,950,653

The ITA2000A is the only tone remote adapter available that is capable of providing radio scan control and monitoring. The controlled radio does not require scan capability but it does require channel steering capability. GAI-TRONICS Models ITR2000A and IPE2500A Tone Remote desksets are capable of displaying (4) or sixteen (16) frequencies respectively, when used with this adapter. The IPE2500A can be programmed to display aliases.

Features include:

- 16-Frequency Control
- Monitor
- Guard Tone Notch Filter
- Courtesy Tones
- Selectable Input/Output Logic Control
- Full Duplex Capability
- Dipswitch Configurable
- Multiple Parallel Tone Deskset Support
- Selectable Guard Tone Keying (2175 Default)
- Scanning Control*
- 2 or 4 Wire Operation
- Adjustable Rec. Input Sensitivity and Transmit Output Level
- Supervisor Control
- Modular Rear-Access Line Connection

Note: The ITA2000A Tone Remote Adapter will typically obtain 12 VDC power from the connected radio. If local power is required, a power supply must be purchased separately.

DC Remote Adapter - Model IDA1000A

The IDA1000A DC Remote Adapter interfaces DC remote control to most radio systems. It has many features that exploit maximum functionality from DC control. Adjustable input and output functions such as transmit output level and selectable input/output logic control give the user flexibility in unique radio setups and operating environments. The IDA1000A controls one or two channels.



Features include:

- 2 Frequency Control
- Monitor
- Selectable Input/Output Logic
- Dipswitch Configurable
- Multiple Parallel DC Deskset Support
- 2-Wire
- Adjustable Receive Input Sensitivity
- Accessory Port
- Modular Rear-Access Line Connection

Note: The IDA1000A DC Remote Adapter will typically obtain 12 VDC power from the connected radio. If local power is required, a power supply must be purchased separately.

Telephone Interconnect (MRTI 2000) - Model PL1877A

The PL1877A Telephone Interconnect, MRTI 2000 (Mobile Radio Telephone Interconnect), is a highly advanced DSP-based tool to connect radio systems to public or private telephone networks. Used with repeaters or base stations, the unit initiates calls (with properly equipped portables and mobiles) and/or receives landline-initiated calls. The PL1877A will allow wireless users to keep in contact with landline phone users.



- Multi-Digit Access and Release
- Triple Key Access
- Paging, Including Multi-User Paging
- CTCSS/CDCSS Control
- DTMF Regeneration
- Attendant Control
- Hookflash
- Over-Beep Tone
- Auto-level
- Remote Modem Programming
- PC Programmable
- Direct Access
- Auto-dial: 25 Numbers
- Pulse/DTMF Dial
- Dial-Click Decode
- Half-Duplex Capable
- Landline Enhanced VOX
- Toll Restrictions
- Automatic Station Identifier
- Programmable Radio Interface
- Modular Phone Line Connection

Note: The PL1877A Telephone Interconnect will typically obtain 12 VDC power from the connected radio. If local power is required, a power supply must be purchased separately.

Products

Accessories

Audio Accessories

GAI-TRONICS' audio accessories are available for various deskset, console, and radio direct applications. The XAAB002A Audio Accessory Box allows simultaneous connection of multiple accessories (headset, footswitch, desk microphone, etc.) and telephone handset, eliminating the need to unplug accessories as personnel changes occur. It can connect to a remote deskset or directly to a mobile radio or base station.

Some of the accessories require the XAAB002A for connection to the deskset and some are plug-compatible with the deskset or our consoles. The following chart details the designed interconnection. "X" Indicates accessory is plug-compatible with associated device. A number entry refers to its associated note below the table.



Model XAAB002A
Audio Accessory Box



Model XCC003C
Coiled Cord with PTT



Model XCP0140A
Headset Interface Box



Model XHS003C
Amplified Headset



Model XDM004A
Desk Microphone



Model XFS002A
Dual Heavy Duty
Footswitch



Model XDM005A
Desktop
Gooseneck Microphone

Accessory Compatibility Chart

Accessory	ILD1000A	IDR1000A	ITR1000-001	IPE2500A / ITR2000A IPE2500A-MLS	CommandPLUS & NAVIGATOR CONSOLE
XAAB002A	X	X	X	X	X (Navigator Only)
XCP0140A	N/A	N/A	N/A	N/A	X
XHS003C	1	1	1	1	4
XCC003C	3	3	3	3	2 or 3
XDM004A	3	3	3	X	N/A
XDM005A	3	3	3	3	X
XFS002A	3	3	3	3	X

NOTES: 1. Requires use of XCC003C or XCC004B Coiled Cord w/ 25815-003 and XAAB002A
 2. Requires use of XCP0140A Headset Adapter
 3. Requires use of XAAB002A Audio Accessory Box
 4. Requires use of XCC003C or XCC004B w/ 25815-003

NOTE: "X" denotes direct (plug-in) compatibility.



Toll Free: 1 (800) 492-1212 Tel: (610) 777-1374
 Fax: (610) 796-5954 www.gai-tronics.com



Quality Management System Certified by DNV-GL - ISO 9001:2015. The policy of GAI-TRONICS is one of continuous improvement; therefore the company reserves the right to change specifications without notice.



Pub. 990101 Rev 6/2020