

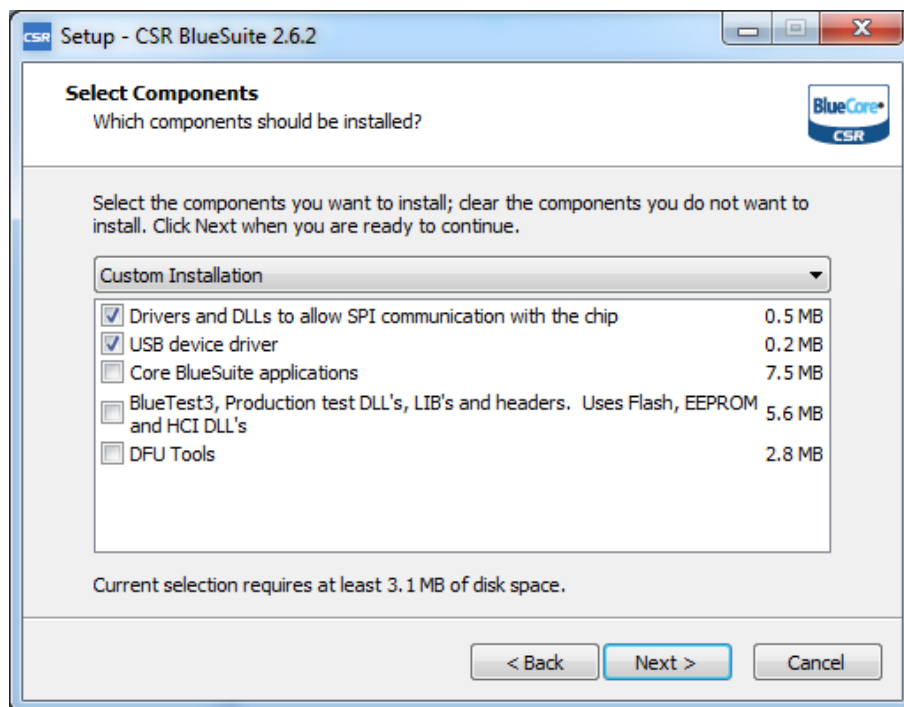
# X10DR<sup>®</sup>

LIBERATE YOUR MOBILE RADIO

## USER PROGRAMMER INSTALLATION GUIDE

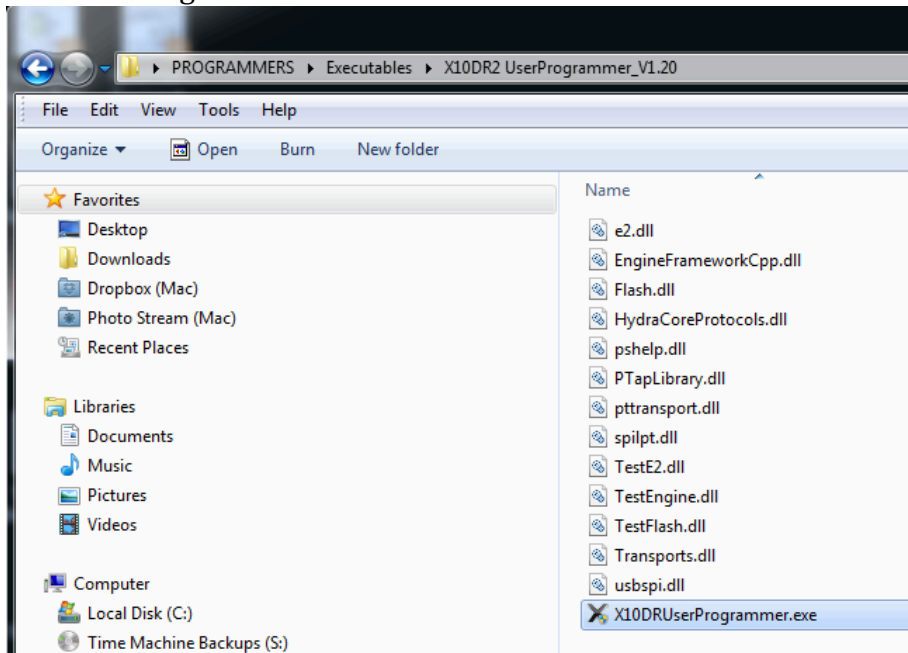
The X10DR User Programmer requires two separate programs to be installed.

- Step 1** – Drivers : Install BlueSuite found on the USB Flash-Drive (BlueSuite...EXE).  
When given the choice of components to install please select the options shown below.  
(Do not install Core, BlueTest3 or DFU tools).

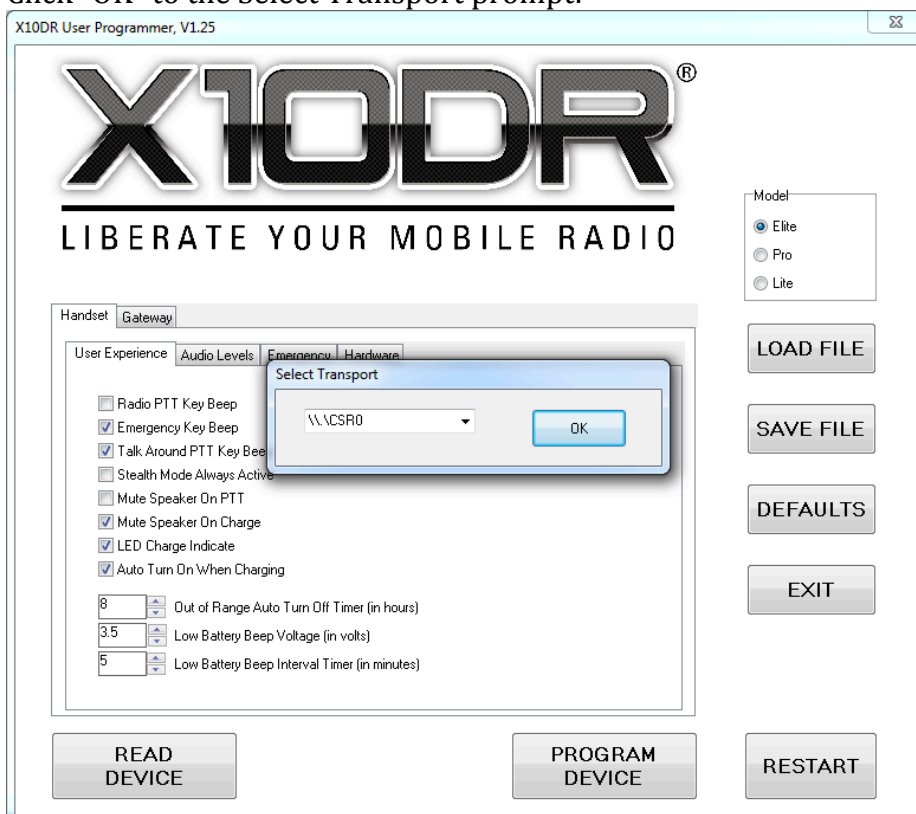


## Step 2 – Programmer :

1. Extract the Programmer to a convenient folder.
2. Start the Programmer from Windows environment:

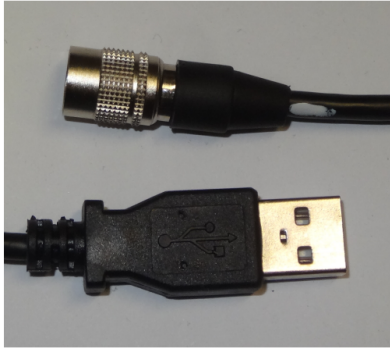


3. Click "OK" to the Select Transport prompt:



Note: Programmer versions V1.26 and later do not have this prompt.

4. Connect the appropriate Programming-Lead (Handset or Gateway) to a PC USB Port.



Handset Programming Lead



Gateway Programming Lead

### **HANDSET PROGRAMMING:**

5. Put the Handset into “Programming-Mode” by turning it ON whilst holding the PTT Button.  
i.e. Ensure Handset is OFF, and then hold PTT-button whilst pressing the RED On/Off button.  
Hear three sets of 2-beeps, and see the LED show RED.  
You may release the PTT and On/Off button anytime after hearing first beep.
6. Connect the Programming Lead to the Handset.  
(Note: This may be done before above step if desired).
7. On the Programmer Software : Click on the “READ DEVICE” button.  
After approx. 3 seconds a window should show “Success” <sup>1</sup>.  
Press “OK “ to clear.
8. Make desired changes to the Handset parameters, and click on “PROGRAM DEVICE” to upload the parameters in the Handset.
9. Click on “RESTART” button to take the Handset out of Programming-Mode.  
The Handset can be manually exited from Programming-Mode by briefly pressing the three side buttons simultaneously (e.g. PTT and two BLUE buttons).  
Hear Power-On beeps from Handset confirming it has exited correctly.

---

<sup>1</sup> If the Programmer fails to READ the device check the Handset LED is RED, then unplug/re-insert USB cable. (This resets the USB connection inside the PC).

## **GATEWAY PROGRAMMING:**

10. Put the Gateway into “Programming-Mode” by inserting the Programming-Lead into the base of the Gateway whilst holding the Gateway’s Front-Panel GREY button.  
See the LED show RED.  
NOTE: During Programming the RJ45 connector should not be connected.  
The Programming-Lead supplies the required power to the Gateway during this process.
11. On the Programmer SW : Click on the “READ DEVICE” button.  
After approx. 3 seconds a window should show “Success”<sup>2</sup>. Press “OK “ to clear.
12. Make desired changes to the Gateway parameters, and click on “PROGRAM DEVICE” to save the parameters in the Gateway.
13. There is no need to “RESTART” the Gateway as it will power-off when the Programming-Lead is removed.
14. Programming is complete.

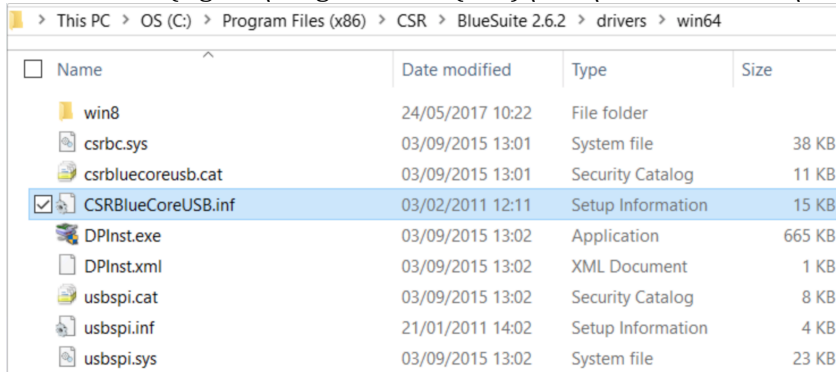
---

<sup>2</sup> If the Programmer fails to READ the Gateway, check the Gateway LED is RED, then unplug/re-insert USB cable – whilst holding down the Grey Button. (This resets the USB connection inside the PC).

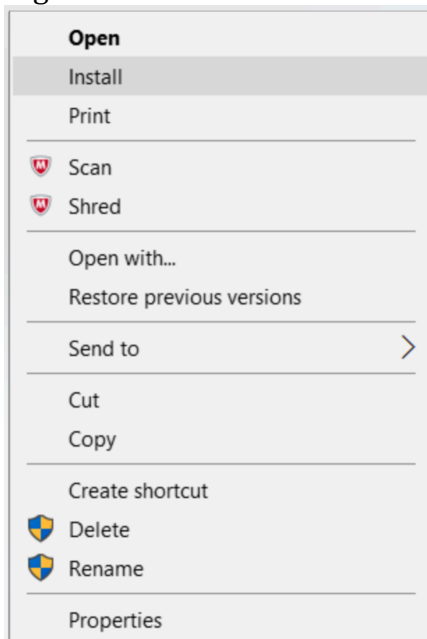
## **TROUBLESHOOTING**

### **A) If the USB Device fails to install properly<sup>3</sup> perform the following steps:**

1. First go into "DEVICES AND PRINTERS".... check if there is a "Generic Bluetooth Device". Right click on it and select "Remove Device". Unplug the X10DR.
2. Then go into Windows Explorer and navigate to where BlueSuite was installed : (e.g. C:\Program Files (x86)\CSR\BlueSuite 2.6.2\drivers\win64).



3. Right click on "CSRBlueCoreUSB.inf". Select "Install".



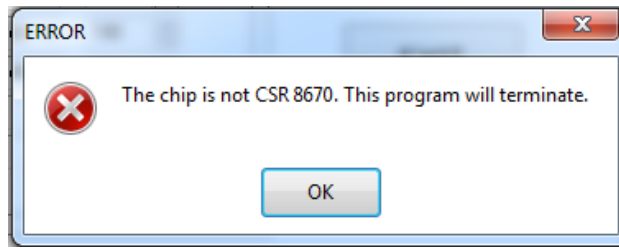
4. Plug in X10DR Handset or Gateway (in programming mode) and check if Device manager now displays "CSR BlueCore in DFU mode". (This step may take a short while.)

---

<sup>3</sup> This will be evident if the Programmer cannot communicate with the Handset and Gateway.

If the Programmer can Read/Program one of the units (Handset or Gateway), then the driver is operating correctly. In this case check cables are properly connected.

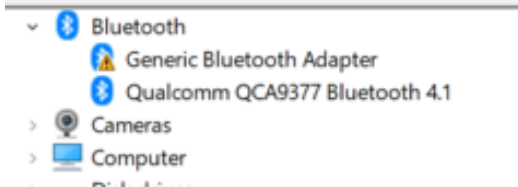
**B) Error message appears when Reading or Programming the device:**



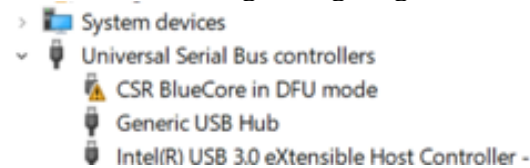
1. This is due to an incompatibility in some recent Laptops and PCs that support USB 3.0 standard.
2. Try connecting the Programming Lead into a USB hub, which is connected to the Laptop or PC.  
(The USB hub provides a conversion to USB 2.0 standard for the Handset / Gateway).

### C) Error installing the BlueSuite Driver on newer Laptops:

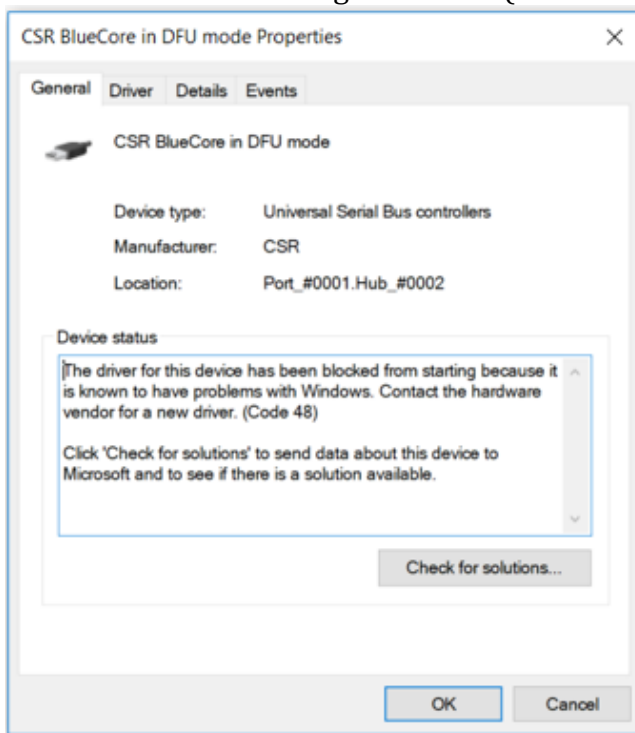
1. Some newer Laptops require a later version of the BlueSuite Driver.
2. If, after installing BlueSuite\_2.6.2, the device shows up (in Device Manager) as a “Generic Bluetooth adaptor” (with a warning triangle):



...or has a warning triangle against the USB CSR BlueCore driver:



...or Windows is blocking the device (with error code 48)



Then un-install BlueSuite 2.6.2 and install the updated version (BlueSuite 2.6.4).

[http://www.x10dr.com/downloads/InstallBlueSuite\\_2\\_6\\_4\\_1046.zip](http://www.x10dr.com/downloads/InstallBlueSuite_2_6_4_1046.zip)

3. This is known to be required on :
  - Dell Inspiron 15 5000 Laptop

If you find this solves your problem, please email : [sales@airradio.com](mailto:sales@airradio.com) with Laptop or PC's Make & Model No, and so it can be added to above list.